



NTPL/POL

SANTA'S WORKSHOP INTL

JEPPESEN

12-25

25 DEC 13
24 Dec 12017

NORTH POLE VILLAGE

RNAV (GPS) Rwy 18

ARCTIC Center

NORTH POLE Approach

WORKSHOP Traffic

122.8

122.8 when ELFCOM inop.

122.8 when ELFCOM inop.

RLS
(Reindeer
Landing System)Final
Apch Crs
360°TMinimum Alt
CLAUS
2500' (2450')RLS
DA(H)
(CONDITIONAL)
250' (200')Apt Elev **50'**
Rwy 18 **50'****MISSED APCH:** Climb to 2500' direct MSLTO, then RIGHT turn direct KSSNG and hold.

Alt Set: INCHES

Trans level: FL 180

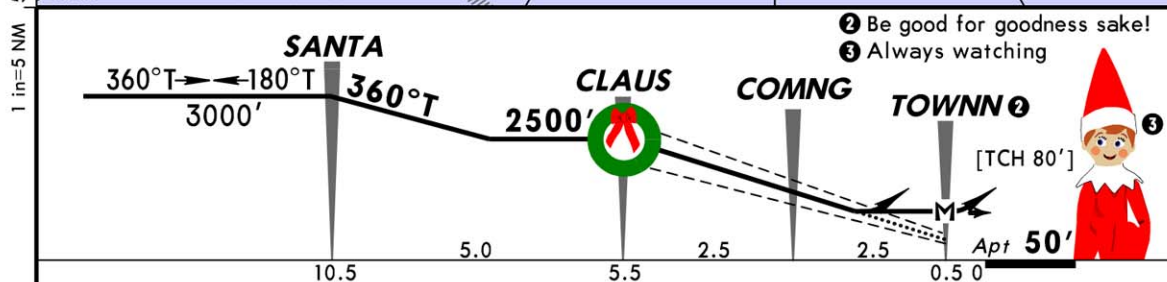
Trans alt: 18000'

CAUTION: Departures may be illuminated by blinding red nose.**CAUTION:** Supersonic heavy departures; non-sleigh traffic discouraged.




1. Reindeer practice flights year-round. 2. Flights in the vicinity may be conducted under the influence of egg nog. 3. No unapproved winter operations. 4. Postal flights with letters to Santa receive priority sequencing. 5. Reindeer and Elves on and in vicinity of runway. 6. Runway does not maintain stationary location.

1000'

MSA WSP NDB



Speed (Reindeer operating)	4	5	6	7	8	9
Glide Path Angle [7.0°]	N/A	N/A	800	998	1140	1430
MAP at TOWNN						
1 If Dasher sick, reduce speed by 2 reindeer						

SALS TINSEL TWINKLE		2500'			MSLTO

STRAIGHT-IN LANDING RWY 18						CIRCLE-TO-LAND		
RLS DA(H) 250' (200')			LOC (Rudolph Out) DA(H) 400' (350')			LOC MDA(H) 500' (450')		
FULL	TINSEL out	TWINKLE out	TINSEL out	TWINKLE out	TINSEL out	TINSEL out	TWINKLE out	Rdr in Svc
6								6
7	RVR 0	RVR 40 or 3/4	RVR 50 or 1	RVR 40 or 3/4	RVR 50 or 1	RVR 60 or 1 1/4		7
8								8
9								9

CHANGES: Noel procedure.

© JEPPESEN, 2013. ALL RIGHTS RESERVED.

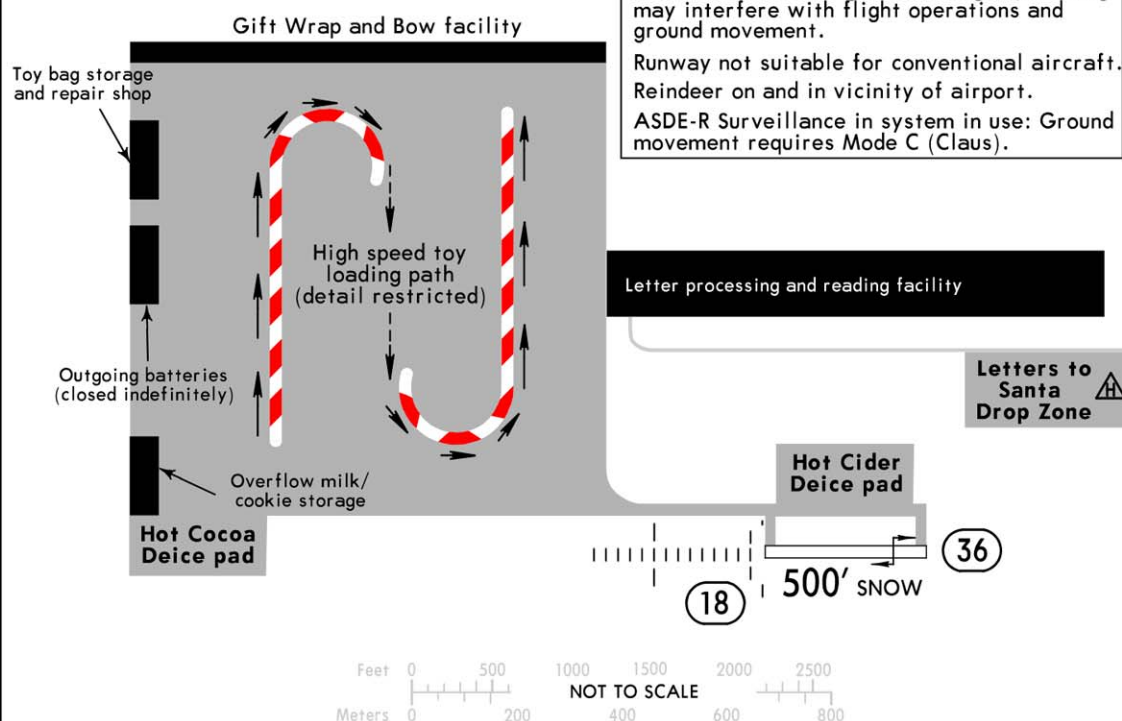
Reproduced with permission of Jeppesen. FOR REINDEER NAVIGATION ONLY. © Jeppesen, 2013.

**NTPL/POL**Apt Elev **50'**
N 90.0 W 0.0**JEPPESEN**25 DEC 13
24 Dec 1201Z **(12-25)****NORTH POLE VILLAGE****SANTA'S WORKSHOP INTL**

WORKSHOP Traffic

NORTH POLE Approach

ARCTIC Center

122.8 when ELFCOM inop.**122.8** when ELFCOM inop.**122.8****ADDITIONAL RUNWAY INFORMATION**

RWY		USABLE LENGTHS		TAKE-OFF	WIDTH
		Threshold	Landing Beyond Glide Slope		
18	RL ② TINSEL ② TWINKLE SALS Reindeer vis Range (RVR)	500'	450'	500'	100'
36	RL				33m

① Only hoof brakes permitted on runway.

② Illuminated Dec 1 - Dec 31 annually.

Decorated trees at both ends of Rwy may be mistaken for Rwy lighting.

TAKE-OFF			FOR FILING AS ALTERNATE	
Rwy 18			RNAV (GPS) Rwy 18	Other
	Adequate Red Nose Illum.	Under-the-weather Nose Illum.		
6 - 7 Rdr	RVR 0	RVR 12	6	NA
8 - 9 Rdr		RVR 7	7	
			8	
			9	



'Twas the night before Christmas and all 'round the field
Santa's helpers were carrying all they could wield
'Twas time to pitch in and load up the sleigh
With every possible gift for work and for play
"All hands to your stations" Santa did say
"For it's almost time for the biggest of days"
The day of the year and the fruit of our work
Is almost upon us, so there's no time to shirk
The manifest lists the destination of each toy
The fastest of sleds bound for each girl and boy
As the takeoff begins, the sleigh starts to scream
To deliver the toys as the children do dream
Back at the pole, a big collective sigh
The hard work is over, save for the big guy
He's good at it though, it's not his first jaunt
Bringing the toys you told him you want



Naughty/Nice List

Last Minute Changes

It's never too late!

<i>NICE</i>	Code	<i>NAUGHTY</i>	Code

Nice behavior change codes:

- 01 - Cleaning up room on own
- 02 - Helping parents
- 03 - Walking old lady across street
- 04 - Giving something to someone in need
- 05 - Cooperating with parents

- 06 - Cooperating with brothers/sisters
- 07 - Helping with pets
- 08 - Helping in kitchen/with meals
- 09 - Being nice
- 10- Other

Naughty behavior change codes:

- 11 - Not listening to parents
- 12 - Peeking at/snooping for gifts
- 13 - Mean to brother/sister
- 14 - Not following rules
- 15 - Misbehavior in school
- 16 - Taking things that don't belong to him/her

- 17 - Getting into or stealing others belongings
- 18 - Vandalism/throwing rocks
- 19 - Being a hellion
- 20- Talking to strangers
- 21 - Telling lies
- 22 - Other